

Transparency Report 2017

Note: This report is a translation. The original version in Portuguese is the authentic version for legal purposes.

Introduction

The corporate purposes of Sociedade Portuguesa de Autores, C.R.L. ("SPA" or "Cooperative") are the management of the Right of Author and the defence and promotion of the cultural goods. Its main activity consists of the management of literary and artistic works, whose author's rights belong to its cooperative and beneficiary members and to the members of foreign sister societies, acting on their behalf.

It is according to the special regime foreseen by the Law n. 26/2015 of April 14, amended by the Decree-law n. 100/2017, of August 23, being therefore considered as corporate body of public interest, with obligation to present every year the Transparency Report.

Legal Structure and Government of the Collective Management organization

SPA is a limited liability cooperative and was constituted by deed on May 22, 1925, published in the "Diário do Governo" no. 121, Series II, dated May 27, 1925.

The subscribed capital of SPA, according to the respective statutes, is variable, being at least 2,500 Euros. At 31 December 2017, the capital is represented by 3,729 bonds, with a nominal value varying between 0.5 Euros and 5 Euros. The minimum capital contributions to be fully subscribed by each cooperator are 25 Euros, represented by 5 nominative bonds of 5 Euros each. In the event of the death of cooperators, the subscribed bonds will be reimbursed to the respective heirs, according to their nominal value corrected in accordance to paragraph 4 of article 23 of the Cooperative Code.

The Governing bodies of SPA are: General Assembly, Board of Directors and Fiscal Council (the composition of the governing bodies is indicated in Annex I).

The current management of the Cooperative is ensured by the Board of Directors, appointed for the four-year period from 2015 to 2018, composed of a president (José Jorge Letria) and four members (João Lourenço, Tozé Brito, Pedro Campos and Paula Cunha), designated administrators, whose decisions are taken by simple majority, the president having the casting vote in the event of a tie.

The license granted for the use of the works of the authors represented by SPA is carried out by three departments - Department of Musical Rights (Physical carriers, Classical Music and New Technologies) ("DEDIM"), Department of Performing Public/ Delegations ("DEXED") and Department of Word, Image, Motion / Individual rights (Theatre and Dance, Literary Edition / Visual Arts / Photography and Audiovisual and Advertising) ("DEPIM").

The support and assistance to the authors is of the responsibility of the Membership Department ("DEAPA"), being the legal issues referred to the Legal Department ("DEJUR"), financial matters are dealt by the Department of Strategic Planning and Financial Management ("DPEGF") and the issues regarding distribution of royalties are of the responsibility of the General Distribution Department ("DEDIG"). Relations with International Organizations and Foreign Sister Societies are ensured by the Department of International Relations and Right of author ("DRIDA").

The internal services are guaranteed by the IT Department/Digital SPA ("DINS"), Department of Human Resources, Training and Support to the Workers ("DRHFA"), Logistics and Patrimony Department ("DELOP"). On its turn, the promotion and cultural divulgation is of the responsibility of the Cultural and Institutional promotion Department ("DEPCI").

The organization chart of the Cooperative is in Annex II.

Owned or controlled entities, directly or indirectly

SPA does not own or control, directly or indirectly, in whole or in part, any entity.

Licences Concession Refusals

The license grants for the use of Copyright is subject to fixed rates and the Authors indications. So, whenever the conditions do not comply with the directions of the authors and/ or the rates fixed the rights of use licenses are refused. Data on licensing denials during the year 2017 were as follows:

DEPIM:

In the area of Performing Arts and Literary Edition there were no licensing denials.

DEDIM:

In the arrangements and adaptations eighteen licenses were rejected, eleven per indication of the authors and seven by the indication of Publishers.

Twelve licenses were refused in the Synchronization (two in a soap opera, four in cinema, two in series and four in electoral campaigns). Of these refusals, ten were indicated by the authors / heirs and the other two by indication of the Publishers;

In the New Technologies, 2 licenses were refused for use of works on digital Karaoke platforms, being a refusal indicated by the Publisher and another for non acceptance from the client of the conditions presented by the Publisher.

DEXED:

In what concerns licensing, the existence of any refusal to issue permissions to users of the works from the repertory managed by SPA, is unknown.

Financial Information

Financial Statements of the Cooperative for the year ended December 31, 2017

BALANCE SHEETS AS AT DECEMBER 31, 2017

(Amounts in Euros)

ASSETS	2017
NON-CURRENT ASSETS	
AFixed tangible assets	7 234 379,01
FInvestment property	574 157,06
AIIntangible assets	1 346 283,55
COthers non current assets	160 077,69
Total of the current assets	9 314 897,31
CURRENT ASSETS	
CClients	9 543 785,63
COther credits to be received	1 144 478,97
CDeferrals	74 882,85
CCash and bank deposits	47 473 093,19
Total current assets	58 236 240,64
Total assets	67 551 137,95
EQUITY AND LIABILITIES	
EQUITY	
CPaid-in capital	13 871,25
FLegal reserve	557 370,91
FBylaws reserve	566 222,90
FRetained earnings	(13 899 110,82)
COther adjustments on financial assets	(589 263,74)
COther changes in equity	97 875,00
Total equity	(13 253 034,50)
FNet income for the fiscal year	537 470,46
Total equity	(12 715 564,04)
LIABILITIES	
FNON-CURRENT LIABILITIES	
Provisions	1 239 427,16
Post-employment benefits liabilities	1 235 955,62
Total non-current liabilities	2 475 382,78
FCURRENT LIABILITIES	
Payables	60 849 420,94
Customers, invoices pending approval	14 521 488,24
State and other public bodies	599 793,14
Other payables	1 194 470,76
Deferrals	626 146,13
Total current liabilities	77 791 319,21
Total liabilities	80 266 701,99
Total equity and liabilities	67 551 137,95

INCOME STATEMENT BY NATURE
FOR FISCAL YEAR ENDED 31 DECEMBER 2017

(Amounts in Euros)

INCOME AND EXPENSES	2017
Services rendered	9 602 059,42
Work for the entity itself	125 386,59
Supplies and external services	(2 355 647,62)
Staff expenses	(4 860 907,35)
Impairment of receivables	119 606,19
Provisions ((increases) / reductions)	(1 075 141,93)
Other income	503 800,74
Other expenses	(725 224,07)
Earnings before interest, taxes, depreciation and amortization (EBITDA)	1 333 931,97
Depreciation and amortization expenses	(827 592,09)
Operating income (before interest and taxes)	506 339,88
Interest and similar income	74 318,80
Interest and similar expenses	(43 188,22)
Net income for the Fiscal Year	537 470,46

FOR FISCAL YEAR ENDED 31 DECEMBER 2017

(Amounts in Euros)

	2017
OPERATING CASH FLOW	
Receipts from customers	45 923 539,71
Payments to suppliers	(33 563 806,39)
Payments to employees	(4 973 349,49)
Cash flow generated by operations	7 386 383,83
Other payments connected with operating cash flow	(316 569,98)
Cash flow of operating cash flow (1)	7 069 813,85
INVESTMENT CASH FLOW:	
Receipts from:	
Interest and similar income	69 548,61
Payments for:	
Tangible assets	(299 059,47)
Financial investments	(140 000,00)
Cash flow of investments (2)	(439 059,47)
FINANCING CASH FLOW:	
Receipts from:	
Increase of capital and by-law reserves	2 521 019,19
Payments for:	
Interest and similar expenses	(43 188,22)
Reductions of capital and by-law reserves	(2 377 967,63)
Financing cash flow (3)	(2 421 155,85)
Variations in cash and its equivalents (4) = (1) + (2) + (3)	6 800 166,33
Cash and its equivalents at the beginning of the Fiscal Year	40 672 926,86
Cash and its equivalents at the end of the Fiscal Year	47 473 093,19

The operating cash flow are described in the Cooperative Management Report

Revenue from royalties by category and by type of use and investment income

In 2017, despite external constraints, an increase in collections was achieved by around 5%. The revenues of 2017 by areas are as follows:

(Amounts in Euros)		
PERFORMING ARTS & SERIOUS MUSIC		
Theatrical plays	971 302,73	
Concerts + Ballet	98 579,75	1 069 882,48
AUDIOVISUAL		
Radio	94 176,25	
Television	1 549 520,78	
Cinema	300 623,68	
Advertising	455 535,07	2 399 855,78
PUBLISHING		
Literary edition (incl. Sheet music edition)	1 294 761,61	
Visual Arts	195 204,52	
Photography	86 541,91	
Software	104 217,86	1 680 725,90
PUBLIC PERFORMANCE		
General	18 437 540,25	
Television	-	
Cable TV – Public Communication	2 547 067,05	
Satellite TV – Public Communication	180 669,33	
Video recordings	70 911,77	
Film Screening	35 044,45	21 271 232,85
CONTRACT MANAGEMENT		
Television – Flat Rate	2 816 287,90	
National Radio – Flat Rate	1 047 457,70	
Local Radio – Flat Rate	203 636,78	
Cable TV – Neighbouring Rights	-	
Cable TV – Copyrights	6 377 924,68	10 445 307,06
MECHANICAL REPRODUCTION		
Sound and video recordings	6 213 109,26	
Serious Music + Synchronization	712 969,91	6 926 079,17
NEW TECHNOLOGIES		
Internet/Ringtones	666 166,83	666 166,83
INTERNATIONAL MANAGEMENT		
Performing and Mechanical rights	1 464 289,65	1 464 289,65
TOTAL		45 923 539,71

According to by-laws, the interest on deposits made constitute also Cooperative's income. On 31 December 2017 the interest income amounted to 74,318.80 Euros, whose proportional distribution to collections by the different areas is as follows:

Performing Arts and Serious Music	1 731,41
Audiovisual	3 883,73
Publishing	2 719,95
Public Performance	34 423,58
Management of Contracts	16 903,81
Mechanical Reproduction	11 208,58
New Technologies	1 078,07
International Management	2 369,68

The deductions made to income for management fees amounted to 9,602,059.42 Euros and the deductions for the social and cultural reserve amounted to 2,518,459.19 Euros.

Operating and financial costs

Operating expenses, including depreciation and amortization expenses for the year amounted to 8,769,371.13 Euros. Sharing them proportionally by the collections, we obtain the following information:

Distribution costs by % of collections by typr of rights

(Amounts in Euros)

	% Collections	External supplies and services	Employee expenses	Other expenses	Depreciation and amortization expenses
Performing Arts and Serious Music	2%	54 879,61	113 244,75	16 895,57	19 280,44
Audiovisual	5%	123 100,58	254 019,54	37 898,5	43 248,01
Publishing	4%	86 212,82	177 901,2	26 542,01	30 288,51
Public Performance	46%	1 091 107,73	2 251 513,99	335 915,09	383 330,73
Contracts management	23%	535 791,95	1 105 613,16	164 952,18	188 235,78
Mechanical Reproduction	15%	355 273,18	733 110,5	109 376,57	124 815,47
New Technologies	1%	34 171,02	70 512,32	10 520,1	12 005,05
International Management	3%	75 110,73	154 991,89	23 124,06	26 388,1
	100%	2 355 647,62	4 860 907,35	725 224,07	827 592,09

In fiscal year 2018, in order to optimize the evidence of Cooperativa's operating expenses, cost centres were implemented. The cost centres will be adapted to the structure of the Cooperative and will be changed whenever necessary. The current cost centres can be checked in Annex III.

Remuneration of the Board of Directors or Direction and Supervision and Benefits Granted

Regarding the organization and functioning, SPA is endowed with a General Meeting, a Direction, a Fiscal Council and a Board of Directors (which ensures current management). The Statutory Auditor is a member of the Fiscal Council. Remuneration in the year ended 31 December 2017 amounted to € 592,176.42, including auditing fees.

Amounts due to the right holders - Frequency of payment and amounts not yet allocated and reason have not yet been distributed

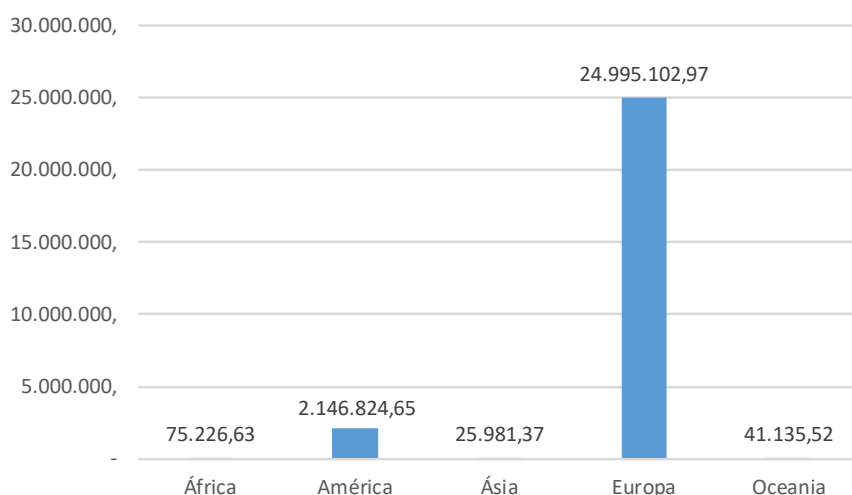
During the year ended December 31, 2017, a total of 31,711,821 Euros of copyright were distributed to national and foreign entities. The detail by area is as follows:

(Amounts in Euros)

	National		Foreign Societies	
Performing Arts and Serious Music	648 773,66		232 364,85	
Audiovisual	2 005 610,81		38 607,73	
Publishing	1 359 819,87		24 495,97	
Public Performance	10 312 604,72		10 920 821,01	
Mechanical Reproduction	3 254 246,57		2 661 203,25	
New Technologies	155 183,67	17 736 239,30	98 088,89	13 975 581,70

Royalties are paid to the authors when they address to SPA or ask the respective payment. In what concerns the Foreign Societies, payment are made after distributions, that is to say, quarterly.

With regard to the net amounts paid as rights of author, both national and foreign, in 2017, the values amounted to 27,284,271.14 Euros. After analysing the geographical location, there is a concentration in Europe (detail by country in Annex IV).



There are no rights that are not distributable. On 31 December 2017 the amount due to the right holders amounts to 60,849,420.94 Euros, of which 19,215,304.17 Euros are available to the authors and 41,634,116.77 Euros are pending identification and distribution. The amounts are outstanding because they are not yet in the distribution period according to the rules and calendar of distribution of SPA (see calendar of distribution in Annex V) and / or because the documentation has not been delivered to correctly identify the holders of rights.

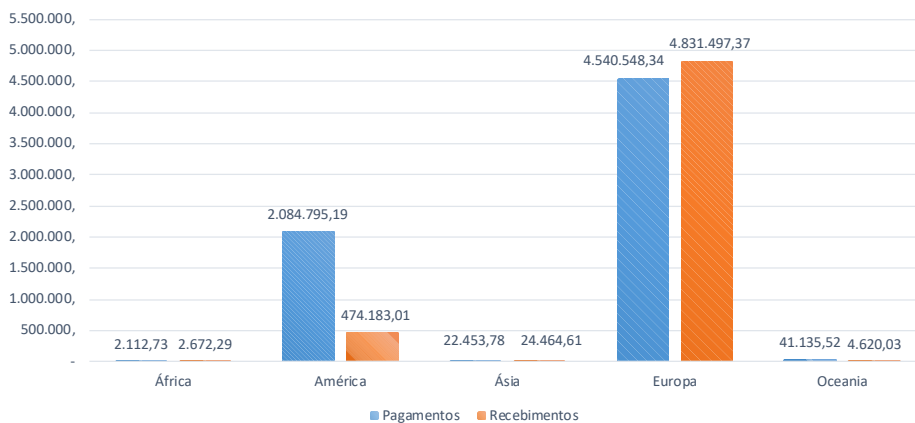
Amounts pending identification and distribution by area:

	(Amounts in Euros)
Public Performance	35 405 351,67
Management of Contracts	3 329 033,52
Mechanical Reproduction	1 753 434,70
Royalties held in suspense	291 192,84
Foreign Fees in Error	282 738,87
Performing Arts and Serious Music	253 773,85
Audivisual	193 344,77
New Technologies	86 450,00
Publishing	38 222,93
Audiovisual	573,62

Relations with other Collective Management Organizations

SPA cooperates with other Collective Management organization, in order to make the collections for the use of the works by authors represented by those entities. Presently SPA cooperates with CMOs all around the world. SPA does not distribute royalties directly to member of other Collective Management organizations. Management fees and other deductions to revenues and amounts paid by / to other Collective Management entities are in accordance with the contracts signed between the parties.

Net amounts received and paid during the Fiscal Year 2017 were as follows:



Please see detailed information per country in annex VI

Cultural and Social activities

Being a collective management entity, SPA allocates a percentage of its revenues to social activities and assistance to its members or cooperators, to training, promotion of their works, products and encouragement to cultural and artistic creation.

This reserve is registered in Equity - Statutory Reserves and had the following movement:

(Amounts in Euros)		
Opening balance	425 541,86	
Increase	2 518 459,19	
Uses	(2 377 778,15)	
Final balance		566 222,90

Percentage of revenues allocated to Reserves during the Fiscal Year ended 31 December 2017:

	(Amounts in Euros)	(%)
Income	45 923 539,71	
Reservation increase	2 518 459,19	5%

From the increase of the reserve, € 2,518,219.19 went to the social action fund, the breakdown by area being as follows:

(Amounts in Euros)	
Public Performance	2 373 492,77
Audiovisual	66 690,89
Publishing	42 978,29
Performing Arts and Serious Music	24 454,59
Mechanical Reproduction	10 190,20
New Technologies	412,45

The use of the reserve during Fiscal Year ended 31 December 2017 was the following:

(Amounts in Euros)	
Royalties credited to cooperative members and surviving spouse	2 277 707,76
Expenses with cultural purposes- supports	67 249,05
Cooperative members insurance expenses	15 643,84
Cooperative members funeral expenses	10 000,00
Emergency subventions	7 177,50

The Board of Directors

- Signatures in the original version -

Annex I

Governing Bodies

- General Meeting

President: Rui Vieira Nery
Vice-President: Mário Figueiredo
Alice Vieira
Substitute: Renato Junior

- Board of Direction

President: José Jorge Letria
Vice-President: João Lourenço
Tozé Brito
António Victorino d'Almeida
EMI – Teresa Gomes
João David Nunes
José de Guimarães
António Torrado
Jorge Paixão da Costa
Substitute: Jorge Leitão Ramos
Ana Zanatti
Paulo de Carvalho
Pedro Campos
Mafalda Arnauth
Carlos Alberto Moniz
António Casimiro
Tiago Torres da Silva
Peermusic – Rodrigo Domingues

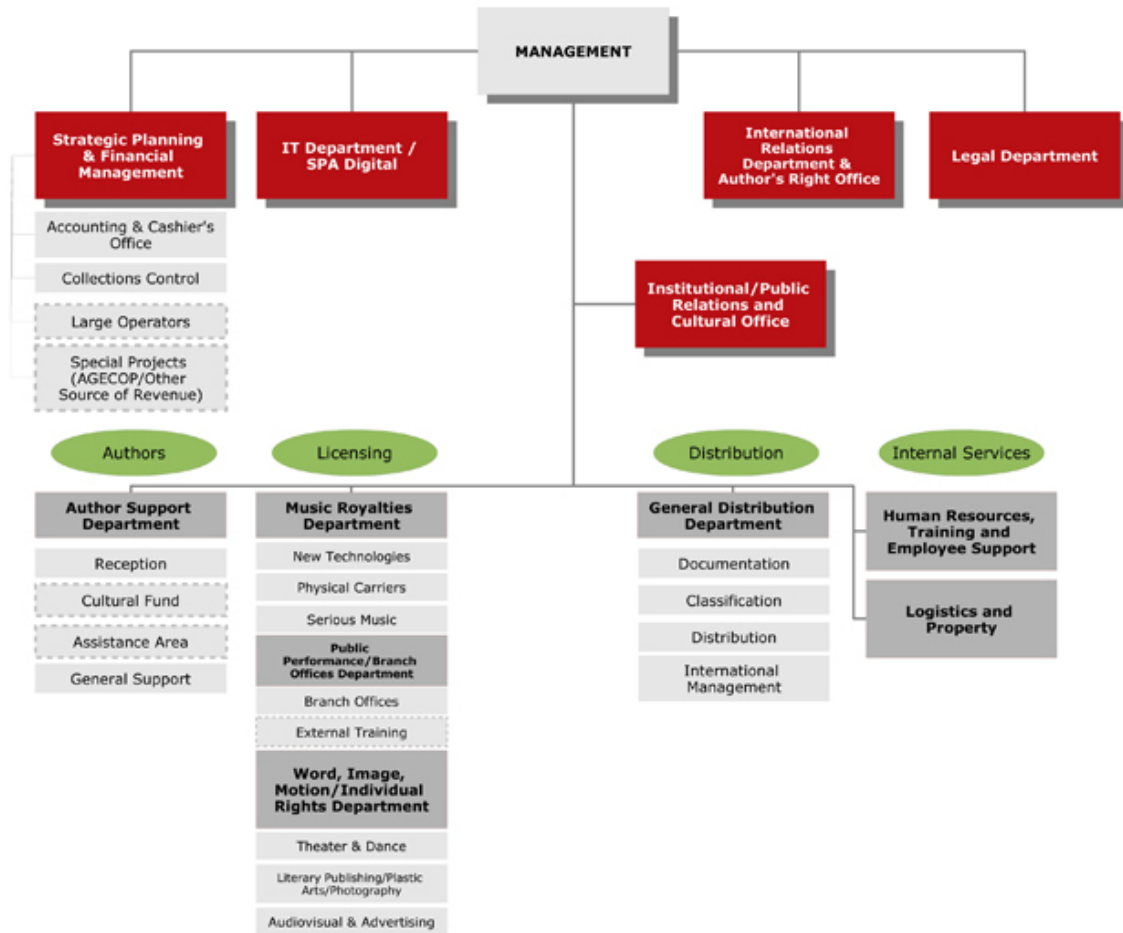
- Supervisory Council

President: Pedro Abrunhosa
Vice-President: Miguel Ângelo Magalhães
Leonor Xavier
Substitute: Catarina Amaro
Vitorino Salomé

Deloitte & Associados, SROC S.A.

Annex II

Organization Chart



Annex III

Costs

Código	Descrição
1000	Administração
1001	Doutor José Jorge Letria
1002	João Lourenço
1003	Tozé Brito
1004	Drº Pedro Campos
1005	Drª Paula Cunha
1099	Administração ALL
1100	DPEGF
1199	DPEGF ALL
1200	DINSD
1299	DINSD ALL
1300	DRIDA
1399	DRIDA ALL
1400	DEJUR
1499	DEJUR ALL
1500	DEPCI
1599	DEPCI ALL
1600	DEAPA
1699	DEAPA ALL
1700	DEDIM
1799	DEDIM ALL
1800	DEXED
1805	Delegação de Angra do Heroísmo
1810	Delegação de Braga
1815	Delegação de Coimbra
1820	Delegação de Faro
1825	Delegação de Horta
1830	Delegação de Leiria
1835	Delegação de Lisboa
1840	Delegação de Madeira
1845	Delegação de Ponta Delgada
1850	Delegação de Porto
1855	Delegação de Setúbal e Évora
1860	Delegação de Viseu
1865	Delegações ALL
1900	DEPIM
1999	DEPIM ALL
2000	DEDIG
2099	DEDIG ALL
2100	DRHFA
2199	DRHFA ALL
2200	DELOP
2299	DELOP ALL
2300	Casa António Gião
2399	Casa AG ALL
2400	Casa Rebordão Navarro
2499	Casa RN ALL
2500	Armazém
2599	Armazém ALL
2600	Apartamento F.P.Melo
2699	Apartamento F.P.Melo ALL
2700	Eventos Culturais
2799	Eventos Culturais ALL
SPA	SPA

Annex IV

Payments of Royalties

(Amounts in Euros)

Africa	75 226,63
South Africa	2 621,3
Angola	59 819,19
Cape Verde	12 627,29
Sao Tome and Principe	158,85
America	2 146 824,65
Argentina	10 719,76
Brazil	332 176,56
Canada	125 214,13
Chile	820,67
Colombia	2 334,31
Cuba	1 738,77
United States of America	1 659 591,42
Jamaica	215,71
Mexico	8 094,36
Peru	5 266,08
Uruguay	340,83
Venezuela	312,05
Asia	25 981,37
China	3 920,53
United Arab Emirates	48,22
Israel	16 057,91
Japan	3 215,3
Macao	2 150,35
Russia	589,06
Europe	24 995 102,97
Germany	178 299,53
Austria	21 876,55
Belgium	51 505,72
Bulgaria	131,17
Croatia	1 077,66
Denmark	63 963,46
Spain	5 172 714,01
Estonia	3 359,26
Finland	3 798,28
France	734 664,75
Georgia	1 806,17
Greece	181,91
Netherlands	163 838,68
Hungary	7 470,5
Ireland	27 583,54
Iceland	1 237,23
Italy	98 577,18
Norway	18 393,02
Poland	824,09
Portugal	16 438 731,81
United Kingdom	1 787 548,09
Czech Republic	1 591,03
Romania	2 513,86
Serbia	117,23
Sweden	152 978,85
Switzerland	60 319,39
Oceania	41 135,52
Australia	41 135,52
Total	27 284 271,14

Annex V

Distribution Schedule

Public Performance												
Description	Jan	Fev	Mar	Abr	Mai	Jun	Jul	Ago	Set	Out	Nov	Dez
Light Concerts			X			X			X			X
Serious Music Concerts			X			X			X			X
Execution through Mechanical devices - through Phonographic Survey						X						X
Execution through Mechanical devices - through Radio Programs						X						X
Film Screening – Musical						X						X
Film Screening – Audiovisual						X						X
Radio Broadcasting – Serious Music						X						X
Radio Broadcasting – Literary						X						X
Radio Broadcasting – Light Music						X						X
Radio Broadcasting – Advertising												X
TV Broadcasting – Audiovisual												X
TV Broadcasting - Musical												X
TV Broadcasting - Musical – Channels												X
International Relayed Nationals												X
TV Broadcasting - Audiovisual – Channels												X
International Relayed Nationals												X
TV Broadcasting – Advertising												X
Representation	Immediate											
Cable Retransmission - Cable Channels							X					
Audiovisual Public Communication							X					

Reproduction												
Description	Jan	Fev	Mar	Abr	Mai	Jun	Jul	Ago	Set	Out	Nov	Dez
Licensing contract IFPI / BIEM			X			X			X			X
Centralized Licensing						X						X
Licensing work by work			X			X			X			X
Online Exploration - Mobile Ringtones (MPRT)			X			X			X			X
Online Exploration - Internet - Preexistentes Works			X			X			X			X
Videogramas - Preexistentes Works			X			X			X			X
Private copying												X
Visual arts	Immediate											
Literary Editing	Immediate											
Music Paper Edition	Immediate											
Photography	Immediate											
Software	Immediate											

Synchronization and Ordering												
Description	Jan	Fev	Mar	Abr	Mai	Jun	Jul	Ago	Set	Out	Nov	Dez
Audiovisual	Immediate											
Advertising	Immediate											
Radio	Immediate											
Videograms – Order	Immediate											
Advertising – Order	Immediate											
Online Scanning - Internet – Order	Immediate											

Revenue from abroad												
Description	Jan	Fev	Mar	Abr	Mai	Jun	Jul	Ago	Set	Out	Nov	Dez
Public Performance (Live music)						X						X
Radio Broadcasting						X						X
Television Broadcasting						X						X
Films (Music)						X						X
Cable						X						X
Private copy						X						X
Performance through Mechanical devices						X						X
Videos						X						X
Internet						X						X
Digital music						X						X
Karaoke						X						X
Ringtones						X						X
Visual Arts	Immediate											
Literary Edition	Immediate											
Music Sheet Edition	Immediate											
Photography	Immediate											
Audiovisual	Immediate											
Stage performance	Immediate											

Pro-rata distribution												
Description	Jan	Fev	Mar	Abr	Mai	Jun	Jul	Ago	Set	Out	Nov	Dez
Symphonic Music Concerts - Lack of Programs				X								
Proportional Attribution of Rights - n / Distributed for Lack of Author Identification (Radio / TV / Concerts)				X								
Live Music and Light Music Concerts - Lack of Programs				X								
Shooting – unidentified right owners				X								
Radio broadcasting - Advertising - Ads not identified				X								
TvI Broadcasting - Musical - Lack of Programs of generalist channels				X								
TV broadcasting - Advertising - Ads not indefied of general channels				X								

Recovery of Identification Pending												
Description	Jan	Fev	Mar	Abr	Mai	Jun	Jul	Ago	Set	Out	Nov	Dez
Live music						X						X
Radio Broadcasting						X						X
TV Broadcasting						X						X
Shooting						X						X
Exploitation on line						X						X
Revenue from abroad						X						X

Annex VI

Receipts and Payments from other Collective Management organizations

(Amounts in Euros)

	Payments	Revenue
Africa	2 112,73	2 672,29
South Africa	2 112,73	2 672,29
América	2 084 795,19	474 183,01
Argentina	10 124,36	2 647,76
Brazil	306 354,78	362 617,16
Canada	125 211,48	13 364,72
Chile	820,67	32 594,59
Colombia	2 334,31	914,66
Cuba	1 738,77	-
United States of America	1 624 272,93	54 002,59
Jamaica	215,71	-
Mexico	8 094,36	1 334,01
Peru	4 974,94	3 193,95
Uruguay	340,83	3 513,57
Venezuela	312,05	-
Asia	22 453,78	24 464,61
China	2 591,51	4 918,74
Israel	16 057,91	2 922,59
Japan	3 215,3	11 572,66
Malaysia	-	1 075,59
Russia	589,06	590,07
Turkey	-	3 384,96
Europa	4 540 548,34	4 831 497,37
Germany	170 025,23	107 617,61
Áustria	21 284,48	23 105,28
Belgium	50 013,28	113 947,43
Bulgaria	131,17	351,77
Croatia	1 077,66	-
Denmark	61 446,23	11 166,32
Slovakia	-	402,74
Slovenia	-	1 817,69
Spain	1 364 798,14	69 816,27
Estonia	197,12	-
Finland	3 798,28	3 563,27
France	724 026,75	343 133,42
Georgia	1 806,17	-
Greece	181,91	-
Netherlands	94 105,47	20 995,88
Hungary	7 470,5	2 789,85
Ireland	23 073,6	515,53
Iceland	1 237,23	-
Italy	96 995,72	122 615,83
Latvia	-	2 722,29
Lithuania	-	517,57
Norway	18 393,02	2 257,05
Poland	824,09	19 135,46
Portugal	-	3 699 880,08
United Kingdom	1 712 725,13	43 085,66
Czech Republic	1 591,03	2 006,04
Romania	2 513,86	-
Serbia	117,23	5 207,14
Sweden	152 978,85	9 288,56
Switzerland	29 736,19	224 717,22
Ukraine	-	841,41
Oceania	41 135,52	4 620,03
Australia	41 135,52	4 620,03
	6 691 045,56	5 337 437,31